

Fehlerwahrscheinlichkeit bei iteriertem Binomialexperiment

m : Anzahl der Wiederholungen = $2 \cdot m + 1$

p : Fehlerwahrscheinlichkeit

```
err := proc(m, p)
```

```
  add( evalf(binomial(2·m + 1, k) · p2·m + 1 - k · (1 - p)k), k=0..m)
```

```
end
```

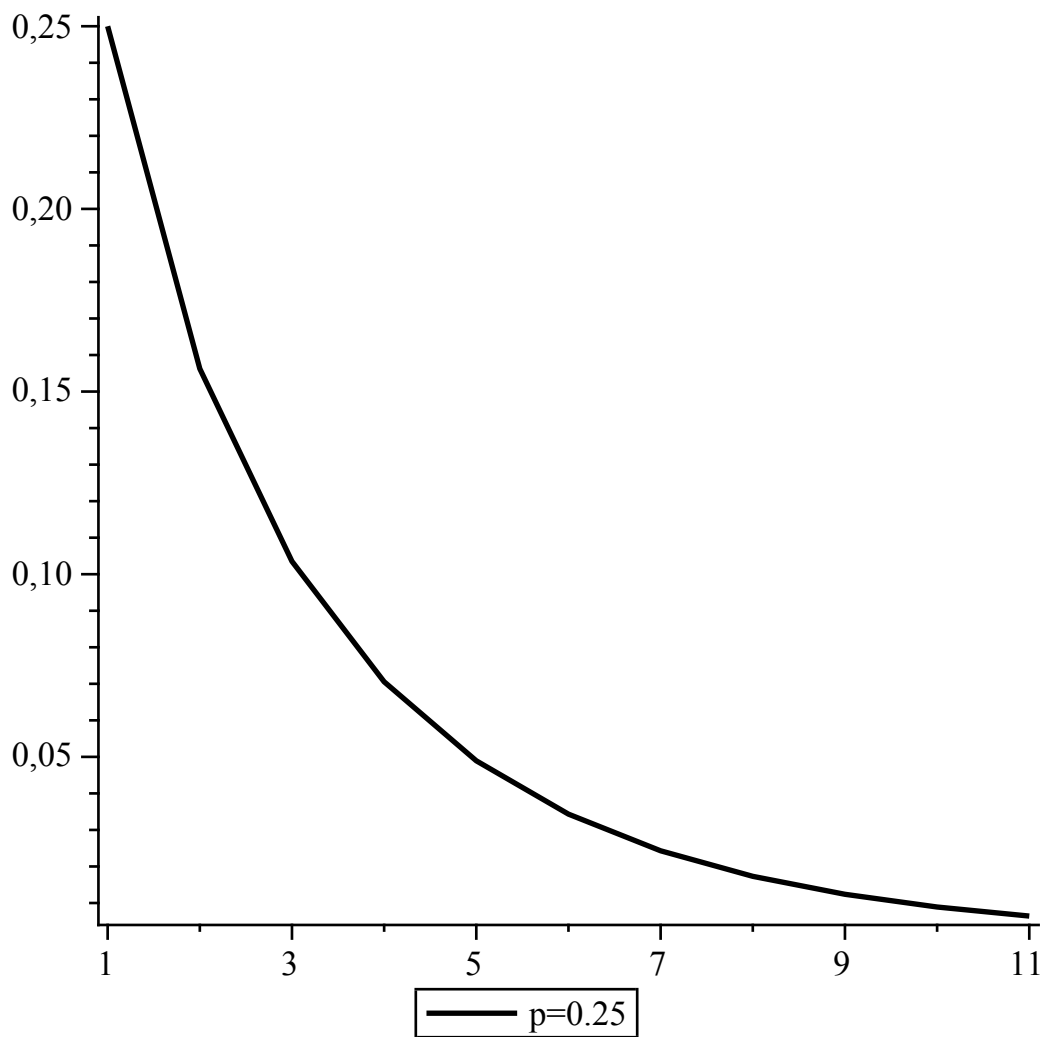
```
err := proc(m, p)
```

```
  add( evalf(binomial(2 * m + 1, k) * p^(2 * m + 1 - k) * (1 - p)^k), k=0..m)
```

```
end proc
```

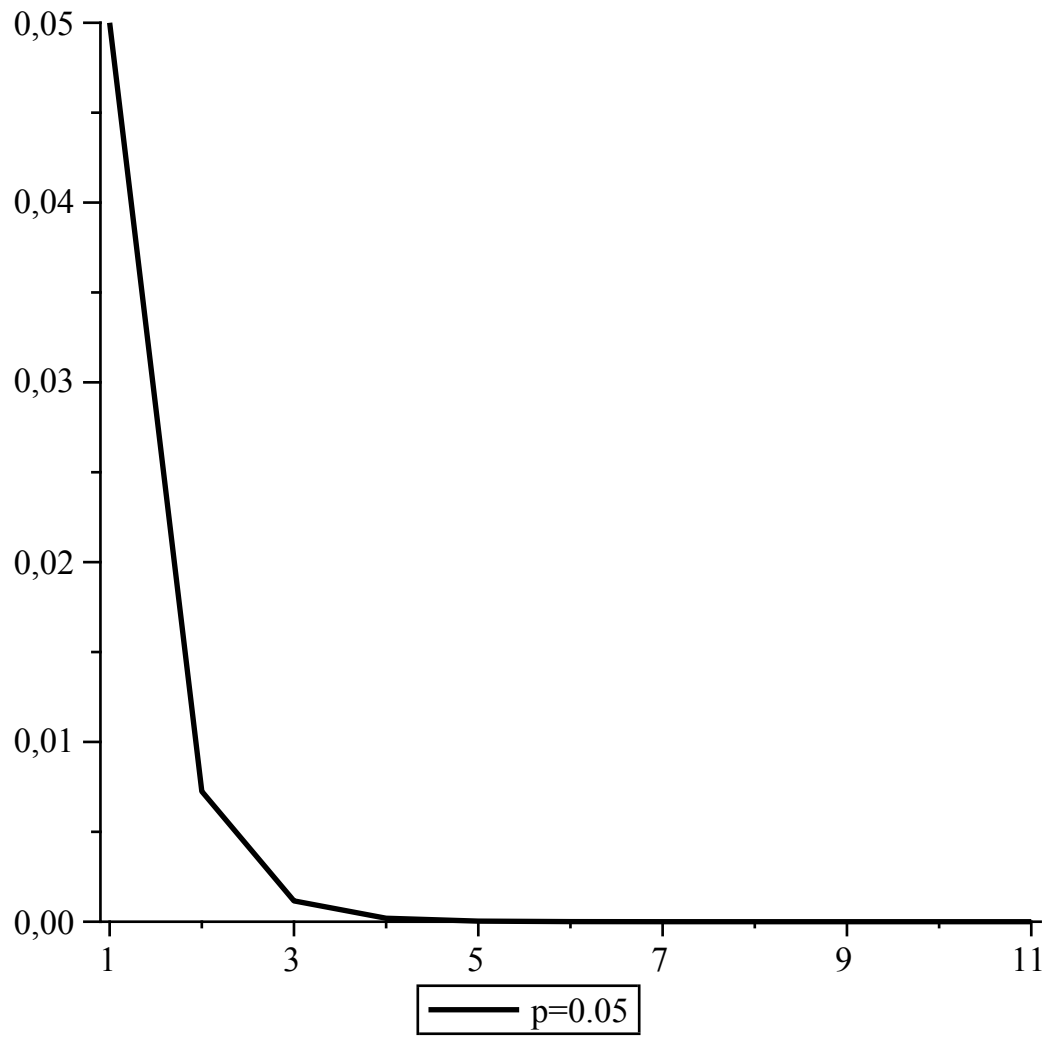
```
with(plots) :
```

```
listplot([seq(err(m, 0.25), m=0..10)])
```

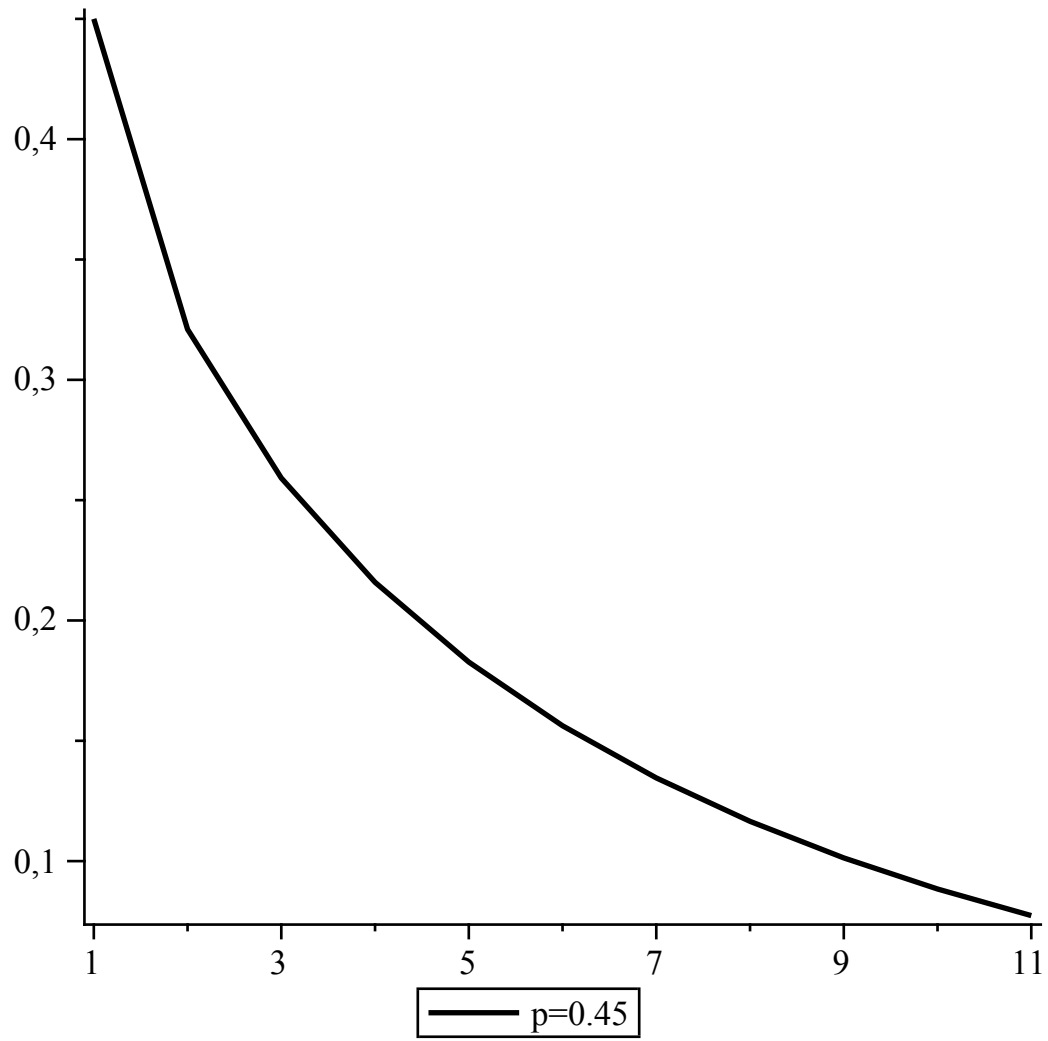


(1)

`listplot([seq(err(m, 0.05), m=0..10)])`



`listplot([seq(err(10·m, 0.45), m=0..10)])`



```
arg := [seq([seq(err(m, p/20), m=0..20)], p=0..10)]:  
listplot3d(arg);
```

